



Kingsland Road, London, E8

BUTLER & STAG



***Physical viewings taking place. Heating, water and internet included! ***
Good sized studio apartment in a fantastic location just off of Dalston Square.

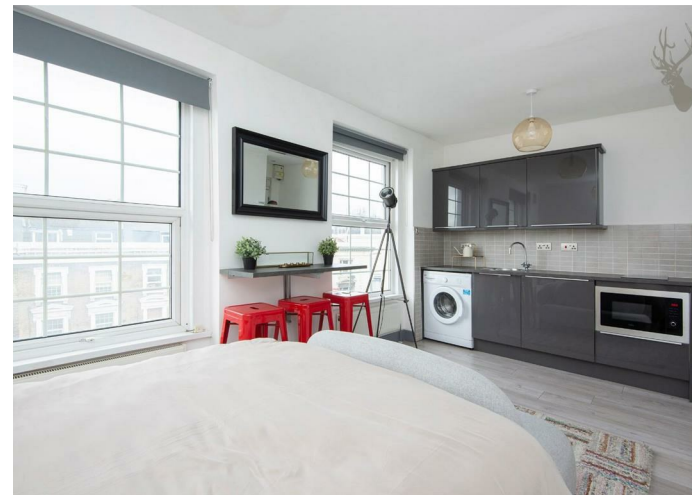


- Studio apartment
- Fantastic location
- Heating, water & internet included
- Modern finish
- Space-saving layout

The accommodation offers a spacious entrance hall, one generous sized bedroom, a high quality newly fitted fully tiled bathroom and a superb open plan kitchen/living room with fully integrated appliances.

The property is well located close to Broadway Market for a selection of cafes, restaurants and market stalls as well as the wide variety of amenities in Dalston, Stoke Newington and Islington.

Located on the corner of Dalston Junction, there are an abundance of transport options at hand from the many buses that serve Kingsland Road and Haggerston Station (East London Line) all providing swift access into Central London.

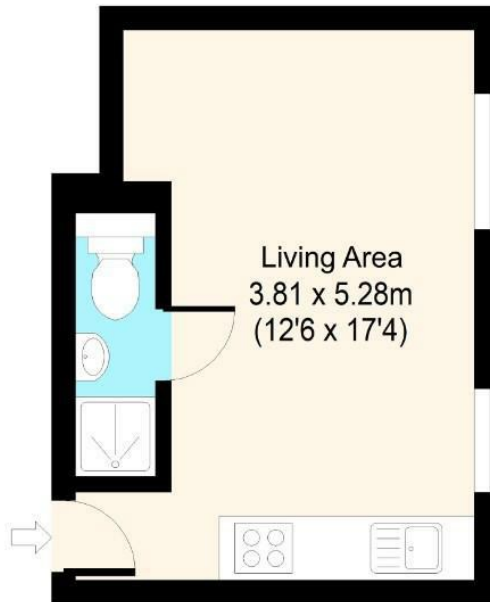




Kingsland Road, E8

Third Floor

Approx. 19.23 Sq. meters (207 Sq. feet)



Total area: approx. 19.23 Sq. meters (207 Sq. feet)
For illustration purposes only - not to scale

www.lpaplus.com

BUTLER & STAG

☎ 020 8102 1236

🏠 508 Roman Road, Bow, London, E3 5LU

✉ bow@butlerandstag.com

www.butlerandstag.uk

IMPORTANT NOTICE - These particulars have been prepared in good faith and they are not intended to constitute part of an offer or contract. We have not performed a structural survey on this property and the services, appliances and specific fittings have not been tested. All photographs, measurements, floor plans and distances referred to are given as a guide and should not be relied upon.